



**Easyrent**  
Rental, Storage, POS Software



## Easyrent Rental, Storage, POS Software.

WINTERSTEIGER now offers the total management solution for your sports shop. Easyrent provides you with a complete software solution for retail inventory, rental inventory and customer relationship management. The completely modular system can be extended from a single location solution to the networking of several shops depending on requirements.

### **Easyrent Rental Software**

Perfect for purely rental businesses. The tried and tested rental software with all its functions for easy management of your rental business. The integrated merchandise management allows for additional sales (sun cream, etc.) without inventory management, ordering system and stock-taking.

### **Easyrent POS - Merchandise Management**

Supplementary to the Easyrent rental software there is also Easyrent POS. This complete merchandise management system is used to carry out all sales, stock-taking, inventory management, etc. within the Easyrent program. It also enables rapid management of rental transactions and sales without having to switch menus.

### **Easyrent Depot Software**

As is to be expected the storage management functions easily and above all very quickly. At the touch of a button the system searches for a free space and automatically calculates the price.



**Contents:**

<b>Easyrent Rental and Depot Software</b>	<b>4</b>
<b>Easyrent POS</b>	<b>14</b>
<b>Figures, Data, Facts</b>	<b>18</b>
<b>After Sales Service</b>	<b>20</b>
<b>WINTERSTEIGER SPORTS</b>	<b>21</b>
<b>WINTERSTEIGER Worldwide</b>	<b>23</b>



## Easyrent Rental can be as easy, secure and efficient as this. Rental and Depot Software.

Reliable, user-friendly, direct data access. Renting skis professionally means working with Easyrent, as this fail-safe software is based on a relational database which guarantees its availability for use around the clock. Easyrent is popular with users due to its incredibly user-friendly interface which can be operated perfectly even by temporary and seasonal staff who have no computer skills after only a short training period.

The WINTERSTEIGER terminal server solution enables constant accessibility of all information by means of direct access to the central database. This means working efficiently with the most current data - without error-prone data synchronisation - even when branches are networked! Statistics on rentals, rental inventory, sales, employees or branches make planning easier and provide access to meaningful results.



## Your benefits summed up:

### Optimised Rental Processes and Storage

- Rapid acquisition of customer data
- Rapid processing of groups and families
- Immediate and accurate status information about rented items
- Easy exchange of equipment
- Immediate booking of rental items

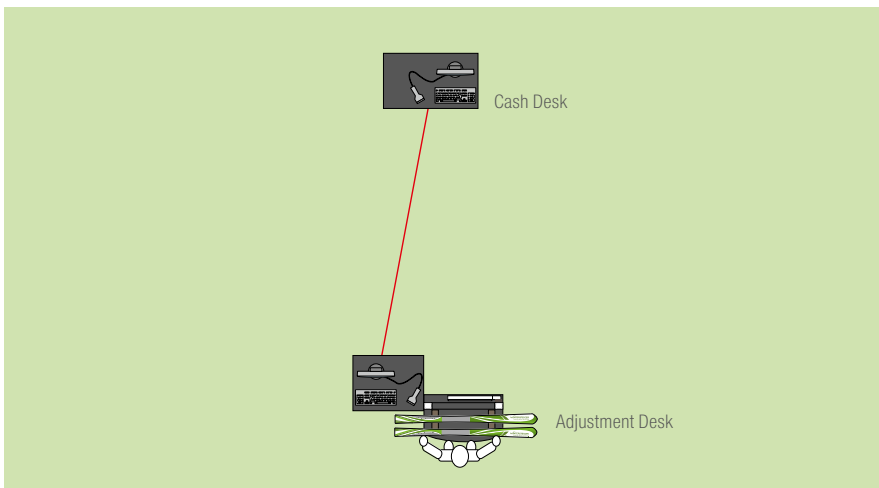
### Statistics

- Display of peak times to allow better staff planning
- Detailed reports on every single rental item show precisely how much profit is made on each item
- Determination of the sales price of rental items

### Technical Highlights

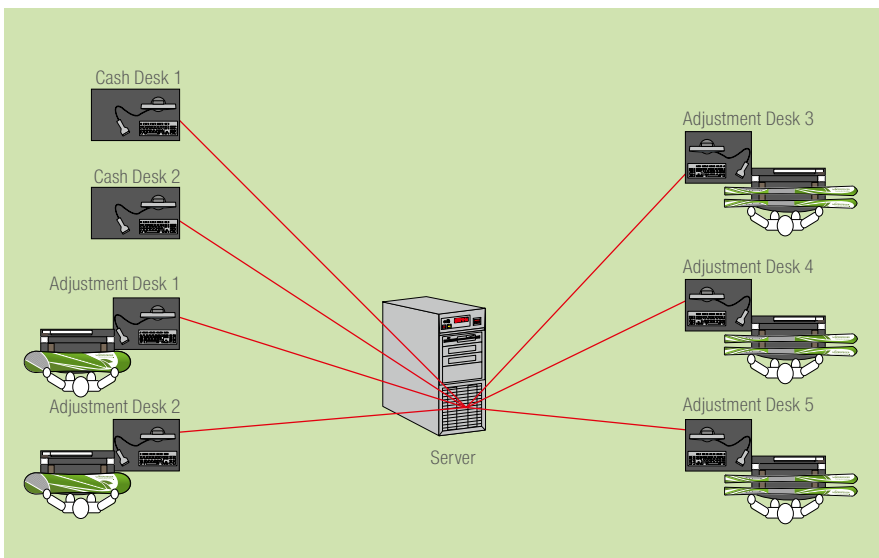
- Integrated standard ISO 13993
- Online reservation module
- Customer input terminal
- Security features due to network camera, ID reader for passports, identity cards, credit cards
- Wireless ski rental by means of PDA
- Numerous interfaces
- Product identification via chip in skis

# Always perfectly networked - regardless of size!



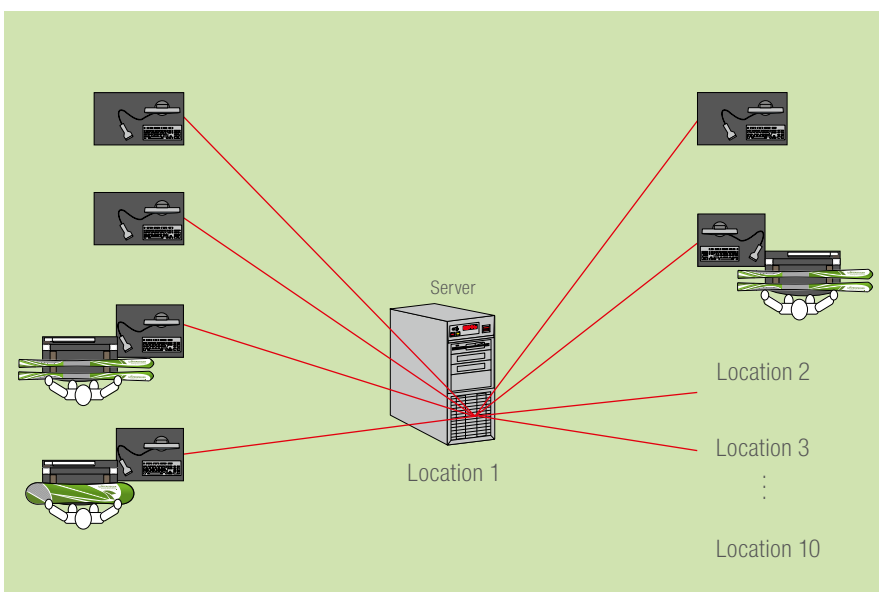
## Easyrent ONE.

The lowest cost version for a shop consisting of one station.



## Easyrent LAN.

The solution for a shop with several adjustment desks and cash desks.



## Easyrent WAN.

The total solution for linking several rental branches in different locations with permanent data availability in all locations.

# Easyrent – Rapid Rental Processing.

Your customers expect short waiting times when equipment is issued, exchanged or returned. The Easyrent rental software was developed with the aim of reducing these waiting times to a minimum thus enabling a short turnaround for both your employees and your customers.

## 1 Data Acquisition

Input of customer data by means of:

- Customer card
- Customer Input Terminal
- Touchscreen
- Credit card
- Online Reservation

## 2 Boot / Ski Issue

- Boot fitting
- Initiation of customer data on the main screen
- Skis and boots are rented out with two scans
- The binding adjustment value is calculated automatically based on the customers physical data

## 3 Ski Return / Cash register

- All unsettled amounts and outstanding equipment at a glance
- One scan and the equipment is returned
- Automatic price calculation





## Easyrent at a glance.

### File

Rental ticket  
Cash register  
Sales journal  
...

### Functions

Easy processing of exchanges  
Easy transfer on inventory between branches  
...

### Rental

Customer (customer group, search)  
Rental equipment (item search, item arrangement)  
Prices (price lists, price structures)  
Inventory  
...

### Reservation

Individual reservation  
Group reservation  
Online reservation

### Merchandise management

Merchandise management (glasses, gloves, ski wax, etc.)  
Interfaces to other systems (ISIS, InterSys)

### Depot

Clear and simple storage management  
Reservation function (also for hotels)  
Interface to TESA magnetic cards/Skidatacards

### ISO 13993

Integrated rental standard 13993  
Data can be recalled at any time  
Interface to binding adjustment equipment

### Evaluations

Current stocks, utilisation  
Documentation of all movements  
Export function for other programs

### System

Clear and simple arrangement of data ...  
- branches  
- workstations  
- user groups  
- ...

### Maintenance

Support  
After sales support  
Telephone support  
Remote maintenance  
Online support via Internet or ISDN

The screenshot displays the EasyRent V7.0 software interface for a branch named 'Wintersteiger'. The customer profile for 'Feelgood Jeff' is shown, including fields for Title (Mr.), Lastname (Feelgood), Firstname (Jeff), Address (Dimmelstr. 8), and City/ST/Z (City, IL, 12345). A table below lists rental items:

C	O	Cust Code	Art.Code	Article description	Article property	RENT-group	Duration
V	O	L456789	265277	Felbob	158	Snowboard	6 d
V	O	L456789	322695	Rossignol Liberty 2	23	Basic Boot	6 d

At the bottom, a 'Scan' section shows a scan code field (marked with a green '4') and a 'Values calculated' section showing a Z value of 'L6.5' (marked with a green '5') and a Pitch of '275'. The status bar at the bottom reads: 'C: MAN\_1 B: Wintersteiger U: schraffeneck Wo: pc0199 Pe:'.

Easyrent manages all activities in rental, depot and sales.

Maintenance ?

INV RF 12:00

Birth: 01.01.1980  
 Tour Operator: 8  
 Tourguide:   
 TravelAgen:   
 Voucher:

Weight: 148-174 lbs  
 Height: 5'11" - 5'4"  
 Eye type: II  
 Age: 10 - 49  
 Sole: <=310  
 Sex: male

Reservation:    
 Deposit:  9

Voucher	Price List	COV	D	Amount due	Amount	Begining	End	Return
		J	0	105,60	105,60	01.04.2008	09:54	01.09.2008
		J	0	26,40	26,40	01.04.2008	09:53	01.09.2008

Open articles: 2 6

Amount due: 7 excl.: 132,00 Tax: 13,20  
145,20

**1 Rental item**

Up-to-the-second due to terminal server solution  
Overview over rented/exchanged/returned/sold skis

**2 Personal data/physical data**

Easy data acquisition and acceptance

**3 Group**

Rapid group processing

**4 Scan**

Using the wireless scanner in the rental shop allows time savings

**5 Values calculated**

Automatic calculation of binding adjustment value

**6 Equipment unsettled**

Display of equipment outstanding

**7 Amount unsettled**

Display of unsettled amounts in several currencies

**8 Travel agent**

Quick and easy processing of travel agency

**9 Security**

Network camera  
Credit card reading function  
Identification cards

## Easyrent in detail.



### Easy acquisition of customer data.

Customer data can be acquired by means of customer card, check-in terminal or the ID reader keyboard. The customer's data is entered directly into the Easyrent program on the check-in terminal by way of the user-friendly interface and acknowledged with a customer information receipt. This saves time for employees and reduces waiting time for the customer. Otherwise data is entered via the touch-screen or keyboard.

### Secure acquisition.

A photo of the customer or of personal identification (identity card, passport, etc.) is stored in the database using a network camera. Rapid read-out and transmission of data from passports, identity cards and credit cards to the Easyrent program functions easily and reliably using the ID reader keyboard. Customers sign their rental vouchers, customer cards, etc. on a signature pad. The signature is then stored in a digitised format.



### Wireless ski rental.

Easyrent can also be loaded on a PDA (Pocket-PC) with integrated scanner. The PDA allows employees to move around freely in the shop via wireless LAN.

### Rental items.

All items are organised into rental groups and information is displayed about description, length, status, (rented or sold).

This means:

- Quick and easy item search
- Excellent overview
- Straightforward allocation of price lists
- Rapid price correction
- Items can be arranged using fast copying function

### Convenient reservation.

Whether individual or group reservation - the availability of rental items can be checked at any time. It is also possible to reserve the desired equipment from home in advance using the Internet. The reservation module can be incorporated into any existing home page.



### Integrated rental standard ISO 13993.

Easyrent will assist you with random selection, scope of selection and test documentation and for this purpose offers a data link to the Speedtronic binding adjustment and test computer for automated data exchange. All test results stored in the Easyrent program, can be called up at any time and provide security in liability cases.



### Speedtronic adjustment desk.

Simply enter the physical data and rent up to two pieces of equipment! Even this can now be done really simply with the Speedtronic. The binding adjustment equipment acts as an adjustment desk - and the computer thus becomes superfluous.



### Pooling of accounts.

Enables several shops to be merged into one rental pool and is distinguished by the following features:

- The customer can rent, exchange and return equipment anywhere.
- Central database for all those participating in the pool
- Permanent accessibility of data at all rental stations
- Facility for separate invoicing of pool sales per sports shop



### Easy service function.

Recording and performance of service for customer skis/snowboards.

- Request pick-up date
- Print out machine-resistant labels

### Sale of rental items.

The system automatically suggests a sale price for the used item based on an included calculation of its use. The rental item is then automatically removed from the master data of the items.



### Cashless Easyrent.

No separate keying in of the payment amount due to direct link to ATM and credit card systems. The Easyrent program transmits the amount to be paid directly to the terminal.



### Easy processing of exchanges.

Only 2 scans are required for exchanging equipment: the returned item and the new rental item are scanned and Easyrent automatically calculates the new rental price. In this case there is no need for a customer search.



**Clearly laid out customer display.**

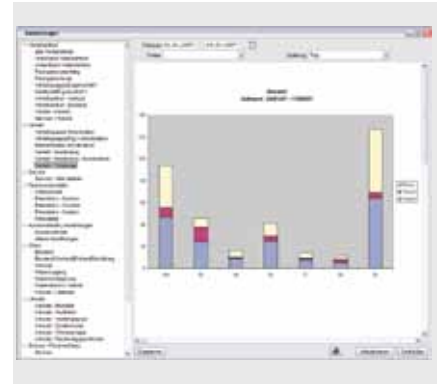
The display facing the customer showing amounts and descriptions makes the payment process easier particularly in the case of foreign guests speaking other languages.



**SKIDATA™.**

Easyrent has an interface to the SKIDATA™ equipment. The customer can easily pay your rental shop using the SKIDATA™ keycard. It is also possible to take payments from SKIDATA™ keycards.

Advance Sale of SKIDATA™ Cards.  
Sale and invoicing of ski cards in Easyrent. Invoicing also functions via the SKIDATA™ Keyvalue card.



**Comprehensive statistics.**

Overviews of current inventories and utilisation make it easier to make decisions when purchasing new equipment, deploying staff, etc.

- Asset addition and disposal, equipment inventory, service, prices, payments, etc.
- Easy stock-taking of rental items
- Amortisation calculations
- Customer statistics, hotel/travel group sales, and much more
- Export function to other programs



**Product identification.**

Products that already have a barcode or storage chip simply built into their surface can be read in by Easyrent thus making both arrangement of the rental items and the rental process easier.



**User access.**

Easyrent provides the ability to specify different user groups.

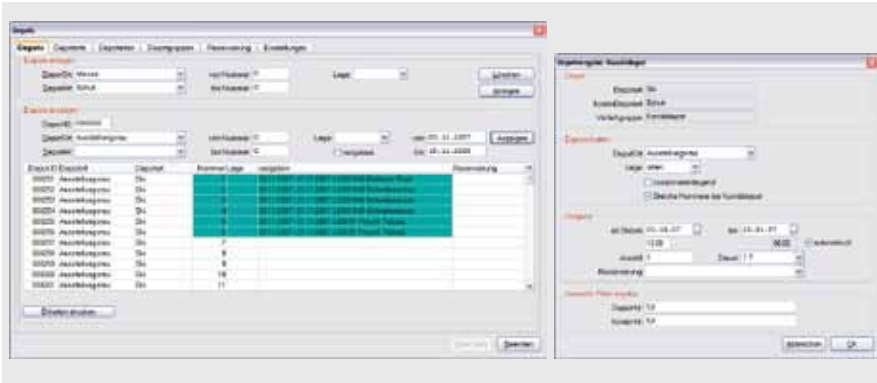
- Issuing of various authorisations
- Improved operating security by hiding unauthorised program functions
- Security against unauthorised access
- Complete data protection



**Integrated merchandise management.**

The integrated merchandise management allows for additional sales (sun cream, etc.) without having to open another screen.

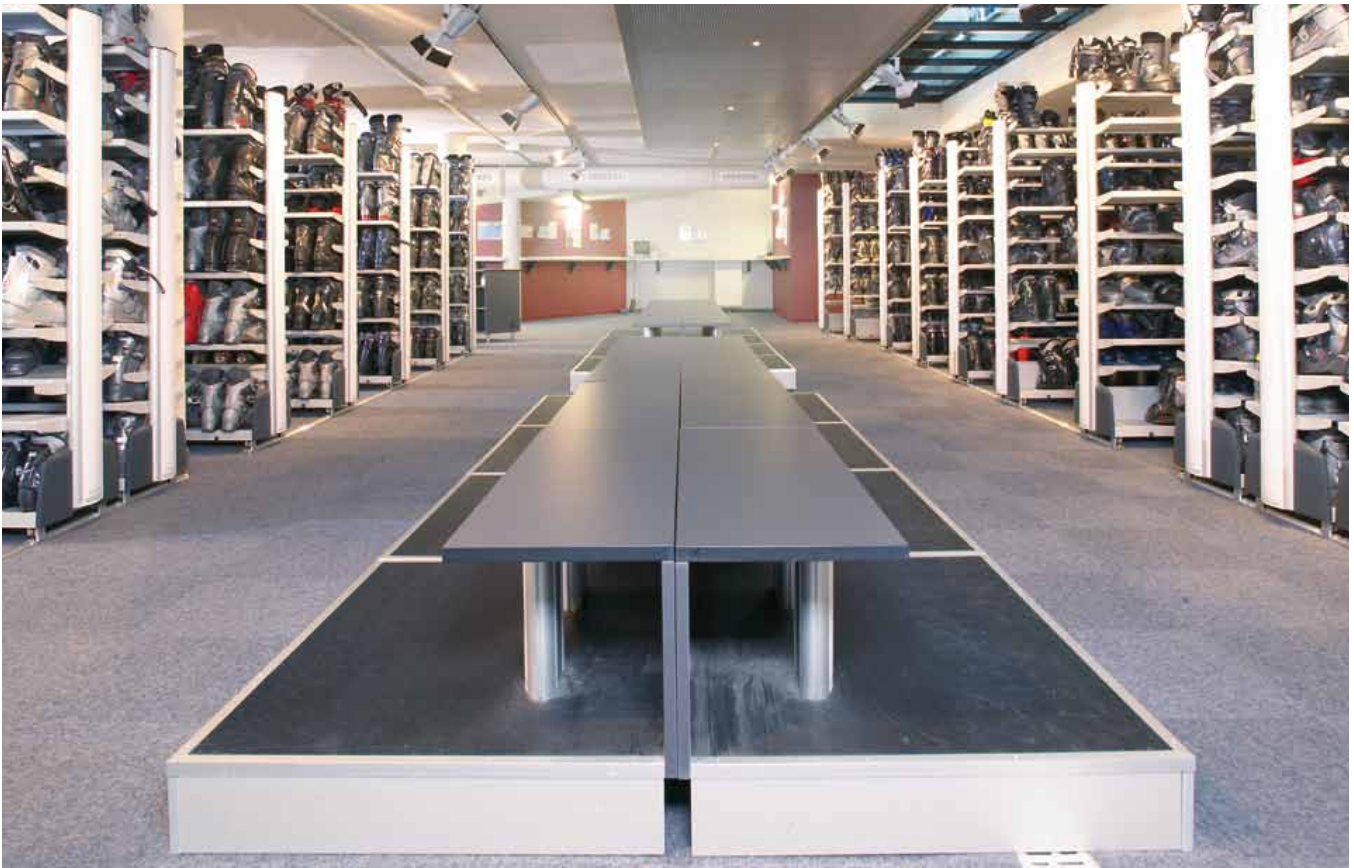
# Easyrent Depot Software.



- Simple and clearly laid-out arrangement of storage spaces
- Storage spaces can be reserved
- Setting up of ski, boot, box, combined, cycle and snowboard storage spaces
- Link to depot storage systems

Equipment storage management is simple and fast. At the push of a button the system searches for a free space and automatically calculates the price. The depot printer prints out all the required information on labels that are applied to the appropriate pieces of equipment. In addition to

this, equipment storage management is also capable of including other branches allowing storage spaces to be allocated for different stations. Spaces can be reserved in a jiffy for hotels e.g. spaces 1-10), or only the desired contingent is reserved for the hotel without space allocation.





## Easyrent POS

### The full program for sales and rentals. Complete Merchandise Management.

Supplementary to the Easyrent rental software there is also Easyrent POS. This complete merchandise management system is used to carry out all sales, stock-taking, inventory management, etc. within the Easyrent program. It also enables rapid management of rental transactions and sales without having to switch menus.



### Your benefits summed up:

- One software for sales, rentals and depot
- Optimum customer processing
- Accurate inventory control for your shop
- Warehouse management
- Ordering system
- Stock-taking



### Optimum processing.

- Easily retrievable real-time access to information about on-hand and backordered items at any of your shop's locations
- View customers entire purchase history
- Easy returns and exchanges
- Sell services such as tuning and binding checks in addition to inventory

### Accurate inventory control.

- Reduce errors
- Integrated purchasing module lets you keep track of inventory from the moment it is ordered
- All items can be called up even from other branches due to networking
- Integrated stock transfer

### Better reporting.

- Display of discounts and to whom discount has been given
- Daily reports and graphic display
- Easy export function
- Detailed statistics on employees
- Checking of margins
- Detailed reporting according to branch, season, item groups, etc.



### Simple setting up of sales items.

Entering groups of goods, suppliers, types of dispatch and payment terms. The matrix function simplifies the setting up of different sizes, colours, etc. Adoption of the FEDAS key makes setting up item groups easier.

### Orders.

Easyrent contains a complete ordering system. From the automatic order suggestion if minimum order is not reached, to order notes and delivery notes.

### Goods received.

Simple booking of goods received and immediate printing of barcode labels.

### Stock-taking.

Complete stock-taking on the due date or even during current operation. Fast PDA and wireless scanner simplify stock-taking.

## Easyrent Support.



WINTERSTEIGER's commitment to quality sales and support means we will work extensively to design the proper solution for your shop and steadfastly support that solution.

- Assistance in designing the best rental process for your shop
- Help in selecting the proper hardware for the desired solution
- Assistance in selecting the best fixtures for your shop – tech benches, kiosks, racking etc.
- Support forum at [easyrent.wintersteiger.net](http://easyrent.wintersteiger.net)
- Remote maintenance and support



# Easyrent's most important key data at a glance.

## Operation and customer acquisition

- Very easy operation even for computer novices
- Short turnaround times for customers
- Operation with barcode scanners (wireless or cable scanner), mouse, keyboard, touch-screen monitors or pocket PC/PDA
- Optional: contact-free rental process
- Colour coding for rented/sold/returned/storage, etc.
- Rapid acquisition of new customers:
  - Check-in terminal
  - Online by way of reservation module
  - Direct input
  - Credit cards
  - Customer cards
- Convenient permanent entry by way of calendar or barcode
- Fast issuing and return of rental items by way of barcode
- Direct display of the Z number to be adjusted on the binding
- Fast exchange process without prior customer search
- Recording of securities simply by means of passport, identity card, credit car or network camera with photo of customer/identity card

## Easy creation of family and travel groups

- Possible to define group and set up members using barcode
- Settlement of group invoices optionally through group leader or separately for each member
- Also possible to create the group subsequently
- Members can be added/removed at any time
- Group settings are transferred to each member
- Good overview of unsettled equipment and amounts within the group

## Reservation

- Exclusive! Online via dedicated home page which can be created directly in Easyrent
- Manual reservation on models or categories (VIP, TOP, etc.)
- Via e-mail directly in Easyrent
- Group creation also via reservation
- Data acceptance of Intersport online reservation
- Data acceptance into rental

## Rental

- Invoicing on an hourly, half-daily, daily, seasonal basis
- Automatic set prices, children's price lists
- Campaign price lists in a definable period (e.g. Easter)
- Possible to set up own list of additional prices
- Nominal charge (ski insurance) for every rental group individually or on a percentage basis via rental amount

## Rental groups / Price groups

- Good overview of all items
- Easy price list assignment
- Items can be set up quickly using copying function
- Possible to change several items at the same time

## Sale of rental items

- Automatic calculation of the item's current market value by way of:
  - Rental period
  - Rental cycles
  - Net use of item

## User administration

- Setting up of users with different rights and passwords
- Rights can be restricted in detail – optimum system security
- Possible to record all processes of the individual user for continuous checking
- Possible to prepare a test environment using original data for training purposes, etc.

## Complete merchandise management in Easyrent

- Setting up of goods groups, suppliers
- Inventory-tracked merchandise management
- All items (rental and sale) assigned to the customer on a screen, very clearly arranged detailed information
- EAN codes can be used for sale of goods
- Includes stock-taking of goods
- Label printing for pricing of sales items
- Recording and managing orders
- Possible to identify order proposals automatically

## Service function for customers' equipment

- Request pick-up date
- Printing out of a machine-resistant label
- Service code on label can be assigned directly to a customer

## Settlement for customers

- Prepayments, direct invoice or payment through bank
- Group settlement with detailed information about rented/purchased items
- Possible to choose method of payment (cash, Eurocheque, credit card, etc.)
- Possible to accept any currency in payment
- Linking to ATM terminals
- Printing out of invoice using commercially available printer on DIN A4, DIN A5 landscape, till receipt printer using 80 mm paper
- Awarding of fixed prices, discounts

## Travel agent settlement

- By way of vouchers which can be prepared separately for each rental group
- By way of discount for customer
- Invoice with list of all customers and their items
- Group leader with commission on rental/storage/ski insurance

## Allocation of storage spaces for manned/unmanned depots

- Simple and clearly laid-out arrangement of storage spaces
- Storage spaces can be reserved
- Setting up of ski, boot, box, combined, cycle and snowboard storage spaces
- Link to Gladek and Metra depot storage systems

## Extensive evaluations with export function

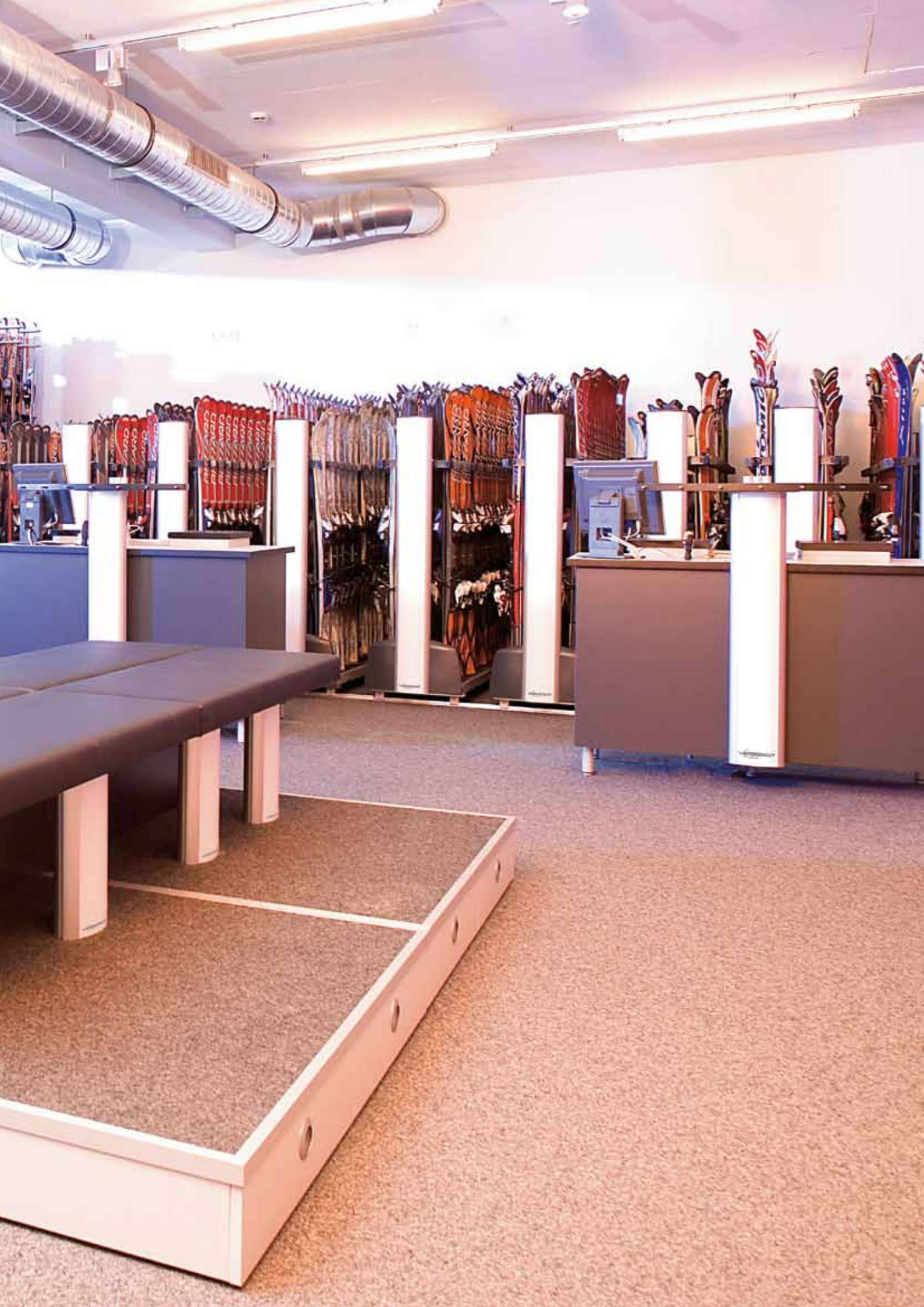
- Rental items, their usage/amortisation, inventory
- Easy stock-taking of rental items
- Sale of goods classified into groups of goods
- Revenues from hotels/travel agents/group leaders
- All agreements can be edited, corrected and cancelled at any time
- Discounts and cancellations are recorded in Easyrent for subsequent checking
- Setting up of individual tills
  - With print-out of daily till transactions
  - Tills with cash breakdown list
  - Possible to void and correct inputs on each till
  - Connection of till drawers which open automatically for payment process

## Interfaces

- Linking up of Speedtronic binding adjuster to Easyrent
  - Rental standard ISO 13993 included in Easyrent
  - Verifications of rental items are stored in Easyrent
  - Easy reproducibility of the test result
  - Optimum security for the rental agent
- Sale of lift cards with link to Skidata
- Link to German Intersys software
- Link to Austrian ISIS software
- Interface to Waldhart ski school program

## System requirements

Windows 2000, XP Professional or Vista  
Windows 2000 server or 2003 server



# WINTERSTEIGER complete. Customer services.

**WINTERSTEIGER sees its mission not only in the manufacture of innovative products for optimum customer benefit. Our demands and expectations go far beyond that. We understand the need for an accompanying partnership process that includes a range of optional services:**

## **From planning to implementation**

WINTERSTEIGER provides complete system solutions for individual customer-specific requirements in all aspects of rental and servicing of skis and snowboards, including 3D planning, amortization and profitability analyses.

## **Strong customer service team**

A large team of extremely well-trained service technicians takes comprehensive care of the following:

- Machine set up
- Training courses
- Service stop-bys
- Preventive maintenance
- Advice
- Modifications
- Problem solving
- Repairs
- Support
- Fast spare parts supply

## **Staff at the ready**

On request, WINTERSTEIGER can also provide you with qualified staff for the entire ski season. Your benefits:

- No searching for skilled staff
- WINTERSTEIGER technicians with ski servicing expertise
- Calculable wage costs

## **Individually tailored finance packages**

WINTERSTEIGER can offer you individually tailored finance packages, e.g. leasing or invoicing according to servicing demand.

## **Marketing Partnership**

WINTERSTEIGER will support you in advertising your ski service. Together we will optimize your efficiency using professional advertising materials.



# Victories are developed in the mind. And with WINTERSTEIGER.

**WINTERSTEIGER is the world market leader in service and rental solutions for the entire ski and snowboard sport. Sport shops, rental stations, well known ski and snowboard producers as well as leading ski federations trust in the system solutions and first class service from WINTERSTEIGER.**

WINTERSTEIGER develops innovative system solutions for the rental and service of ski and snowboards. With this we concentrate highly on and take into consideration the various needs of our customers as well as recognizing the trends early enough to allow them to be brought into the product development.

With this strategy WINTERSTEIGER has established itself as competent partner in the planning and development of service work shops and rental stations. We accompany our customers starting with the evaluation of customer needs, the planning, financing solutions, trainings, personnel leasing, professional marketing support, all the way to our reliable after-sales-service.

## **The product range of Division SPORTS at a glance:**

- Fully automatic service stations
- Base and edge grinding machines
- Base repair and binding adjustment equipment
- Waxing machines
- Rental software
- Rental, depot and drying systems



Who is on top,  
sees much further.



# WINTERSTEIGER. A Global Player. Worldwide.

**WINTERSTEIGER is the world market leader in its three divisions SPORTS, SEEDMECH and WOODTECH. Our success is based on customer proximity which we enjoy due to a globally-structured, tightly-knit sales and service network and sophisticated and future-oriented planning. In this we are guided by the following principles:**

■ According to the „**Progress Principle**“ we are consistently extending our lead with targeted investments in research and development.

■ By the „**Quality and Productivity Principle**“ we mean both computer-assisted planning and design, which result directly in fully automated production processes, as well as strict quality assurance management, which ensures continuous control from design to after-sales service.

■ We meet the „**Qualification Principle**“ with optimally trained employees. Continuous professional development is an essential part of our strategy.

■ On one hand we see the „**Sustainability Principle**“ as our permanent contribution to long-term success, while on the other it represents a clear commitment to conserving natural resources.

## The result:

- 15 subsidiaries
- 60 representatives worldwide
- Sales distribution in 130 countries
- 85 % export share
- World market leader in all three divisions

### Division SPORTS

Total solutions for rental and servicing of skis and snowboards.



### Division SEEDMECH

Total solutions for agricultural field experiments.



### Division WOODTECH

Total solutions for precise thin-cutting of wood.



Headquarters located in Ried im Innkreis, Upper Austria

Success begins with the right decisions. At the right time.  
We look forward to you!



**WINTERSTEIGER**  
Thinking about tomorrow.

#### Headquarters:

**Austria:** WINTERSTEIGER AG, A-4910 Ried, Dimmelstrasse 9,  
Tel.: +43 7752 919-0, Fax: +43 7752 919-52, sports@wintersteiger.at

#### International Companies:

**Canada:** WINTERSTEIGER Inc., CDN-Laval Q.C. H7L 5A1,  
964 Bergar Street, Tel.: +1 450 6637800, Fax: +1 450 6632896,  
monique@canada.wintersteiger.com

**China:** WINTERSTEIGER China Co. Ltd., 9/F New Poly Plaza,  
No.1 Chaoyangmen North Ave, Dongcheng District, 100010 Beijing,  
Tel.: +86 10 8419 3334, Fax: +86 10 8419 3399,  
office@wintersteiger.com.cn

**Germany:** WINTERSTEIGER AG, Subsidiary Germany,  
D-94535 Eging am See, Kollmering 10, Tel.: +49 8544 974-375,  
Fax: +49 8544 974-530, sports@wintersteiger.at

**France:** SKID-WINTERSTEIGER S.A.S., F-73800 Ste. Hélène du Lac,  
Parc d'Activités Alpespace, Tel.: +33 479 25-1160,  
Fax: +33 479 25-1161, office@skid-wintersteiger.com

**Italy:** WINTERSTEIGER Italia s.r.l., I-39030 La Villa in Badia (BZ),  
Strada Ninz, 82, Tel.: +39 0471 844 186, Fax: +39 0471 844 179,  
info@wintersteiger.it

**Switzerland:** WINTERSTEIGER Schweiz AG, CH-6331 Hünenberg,  
Rothusstrasse 5b, Tel.: +41 41 780 23 22, Fax: +41 41 780 23 90,  
office@wintersteiger.ch

**USA:** WINTERSTEIGER Inc., 4705 Amelia Earhart Drive,  
Salt Lake City, UT 84116-2876, Tel.: +1 801 355-6550,  
Fax: +1 801 355-6541, mailbox@wintersteiger.com

#### Representations:

**Argentina:** FIDIA SA, Buenos Aires, **Australia:** Rosbert Interational PTY.LTD., Artarmon, **Benelux:** Koltec Sport Equipment, Dordrecht, **Bulgaria:** Infosport OOD, Sofia,  
**Chile:** Eolia LTDA, Santiago, **Denmark:** Fun Sport, Vejle, **Finland:** Oy Hunteri AB, Turku, **Great Britain:** Anything Technical, Kendal/Cumbria, **Hungary:** Hefa Sport Ltd.,  
Veszprém, **Japan:** SBA Incorporated, Tokyo, **Korea:** Himazone, Seoul, **New Zealand:** Gravity Sports Imports, Rangiora, **Norway/Sweden:** WINTERSTEIGER Norge, Son,  
**Poland:** Ikatur, Kraków, **Romania:** Maxalpin SRL, Brasov, **Russia:** Gorimpex SARL, Moskau, **Slovakia/Czech Republic:** Snow-How, Ricany-Jazlovice, **Slovenia:** Tobos d.o.o.,  
Škofja Loka, **Spain:** Manufacturas Deportivas Viper S.A., Barcelona